



November 28th, 2022

**TO: The Right Worshipful the Mayor, Aldermen and Councillors
of Lisburn & Castlereagh City Council**

A Special meeting of Lisburn & Castlereagh City Council will be held on **Tuesday, 29th November 2022 at 6:00 pm** in the Council Chamber and remote locations for the transaction of the business on the undernoted agenda.

For those Members attending this meeting remotely, the Zoom details are included in the Outlook invitation that has been issued. Members are requested to attend.

A light buffet will be available in Lighters Restaurant from 5.30 pm.

DAVID BURNS
CHIEF EXECUTIVE
LISBURN & CASTLEREAGH CITY COUNCIL

Agenda


1.0 APOLOGIES


2.0 DECLARATION OF MEMBERS' INTERESTS


3.0 DEPUTATIONS

3.1 DfI Roads Eastern report to Lisburn & Castlereagh City Council Autumn 2022

Responses to Members questions to follow.

-  *DfI Roads Eastern report to Lisburn & Castlereagh City Council Autumn 2....pdf* *Page 1*

-  *Schedule of Members' Questions - DfI Roads Division.pdf* *Page 51*

-  *Response to Councillor's questions raised in advance of Autumn Council M....pdf* *Page 56*



Department for
Infrastructure

An Roinn

Bonneagair

Department for

Infrastructure

www.infrastructure-ni.gov.uk

EASTERN DIVISION

Report to

**LISBURN & CASTLEREAGH
CITY COUNCIL**

Autumn 2022



CONTENTS		PAGE
	FOREWORD BY DIVISIONAL ROADS MANAGER	5
1.0	INTRODUCTION	7
2.0	ADDRESSING CLIMATE CHANGE & SUPPORTING SUSTAINABLE TRAVEL	15
2.1	Blue / Green Schemes	16
2.2	M1/A1 Link at Sprucefield	16
2.3	A1 Junctions – Phase 2	17
2.4	A1 Hillsborough to Sprucefield	17
2.5	Minor Works	18
2.6	Maintenance of Structures	18
3.0	NETWORK TRAFFIC AND STREET LIGHTING	23
3.1	Collision Remedial Schemes	24
3.2	20 MPH School Speed Limits	24
3.3	Pedestrian Measures	24
3.4	Traffic Schemes	25
3.5	Traffic Signs and Information	25
3.6	Dropped Kerbs/Mobility Ramps	27
3.7	Carriageway Markings	27
3.8	Legislation	28
3.9	Disabled Parking Bays	29
3.10	Street Lighting	30
3.11	Cycle Measures	35
3.12	Traffic Calming	35
3.13	Transportation	36
4.0	NETWORK TRANSPORT TELEMATICS	37
4.1	Network Transport Telematics	38
5.0	NETWORK MAINTENANCE	41
5.1	Carriageway Resurfacing	42
5.2	Footway Resurfacing	43
5.3	Surface Dressings	43
5.4	Drainage	45
5.5	Verge Strengthening Schemes	45
5.6	Carriageway Refurbishment	45
5.7	Liaison with Utilities	46
6.0	NETWORK PLANNING	49
6.1	Adoptions	50
6.2	Planning Applications	50

FORWARD BY THE EASTERN DIVISION ROADS MANAGER

I have pleasure in submitting the Roads 2022/23 Autumn Report on the work of the Department for Infrastructure (DfI) Roads across the Lisburn & Castlereagh City Council area.

This report deals with works already completed across the Council area during the year 2022/23 and sets out our proposals for schemes to be undertaken in the remainder year 2022/23.

Our contractors developed new working practices to manage the impact of COVID restrictions during 2021/22 which enabled much needed road maintenance and improvement work to proceed. More recently COVID restrictions have eased allowing working practices to begin to return to normal for 2022/23.

In the absence of an Executive, the Department of Finance (DoF) has provided the Department with contingency planning envelopes, for both Resource and Capital, to assist with making decisions on the allocation of resources until a budget is established. The planning envelope provides an allocation for capital structural maintenance activities in 2022/23, which includes resurfacing.

This year's opening Capital funding allocation for structural maintenance is similar to last year at around £80m. This level of investment is welcomed and helps towards the £143 million required annually to maintain the road network in a reasonable condition.

The Department's ability to spend its contingent allocation is dependent on having sufficient contracting resource to hand to deliver the work.

The statutory orders for the A1 Junctions Phase 2 scheme were made in summer 2021 and work on the development of the business case is nearing completion. Our previous minister, John O'Dowd, took the decision to commence the preparation of contract documents for the scheme in readiness for moving forward to procurement at a future date and work on the contract documents has commenced and is expected to be complete by August 2023.

Capital funding also influences our Active Travel, and, Local Transport and Safety Measures programmes. As in 2021/22, significant contingency funding has been provided for Active Travel schemes in 2022/23 that will encourage walking, wheeling and cycling.

Since 2013 the Department's Resource funding has been insufficient to meet its needs and we have relied on in-year allocations to deliver core services including winter gritting. This continues to be the case for the 2022/23 year. As such, the Department at present is continuing with a Limited Service policy for routine maintenance activities such as defect repair and gully emptying.

The Limited Service policy allows the Department to repair defects greater than 50mm on all roads including low trafficked rural roads and on high trafficked roads, defects greater than 20mm will also be repaired. The Department will aim to cut all roadside verges and sightline grass at least twice between

April and October with sightline at bends and junctions being cut more frequently as required to ensure public safety is not compromised.

At present a full street lighting repair service continues during 2022/23.

However, with the uncertainty around budgets it is important for us to monitor all activities within the constrained funding available going forward and difficult decisions may need to be made to re-align activities within funding levels as the year progresses.

I would encourage Councillors to avail of the online fault reporting system on NI Direct. My operational staff are of course also available to assist with queries.

I hope that you find this report informative. The Department values constructive comments on all its activities and I, along with Graeme Salmon and Gabriel Doherty, look forward to meeting the Council.

Des McFarlane
Divisional Roads Manager

1.0 INTRODUCTION

Eastern Division is part of the Roads structure, within the Department for Infrastructure, made of separate business units (within Network Services Directorate) for those who order services and for those who provide services in the Engineering Directorate ((Design & Consultancy Services and Operations & Maintenance) (see figure 1 below)..

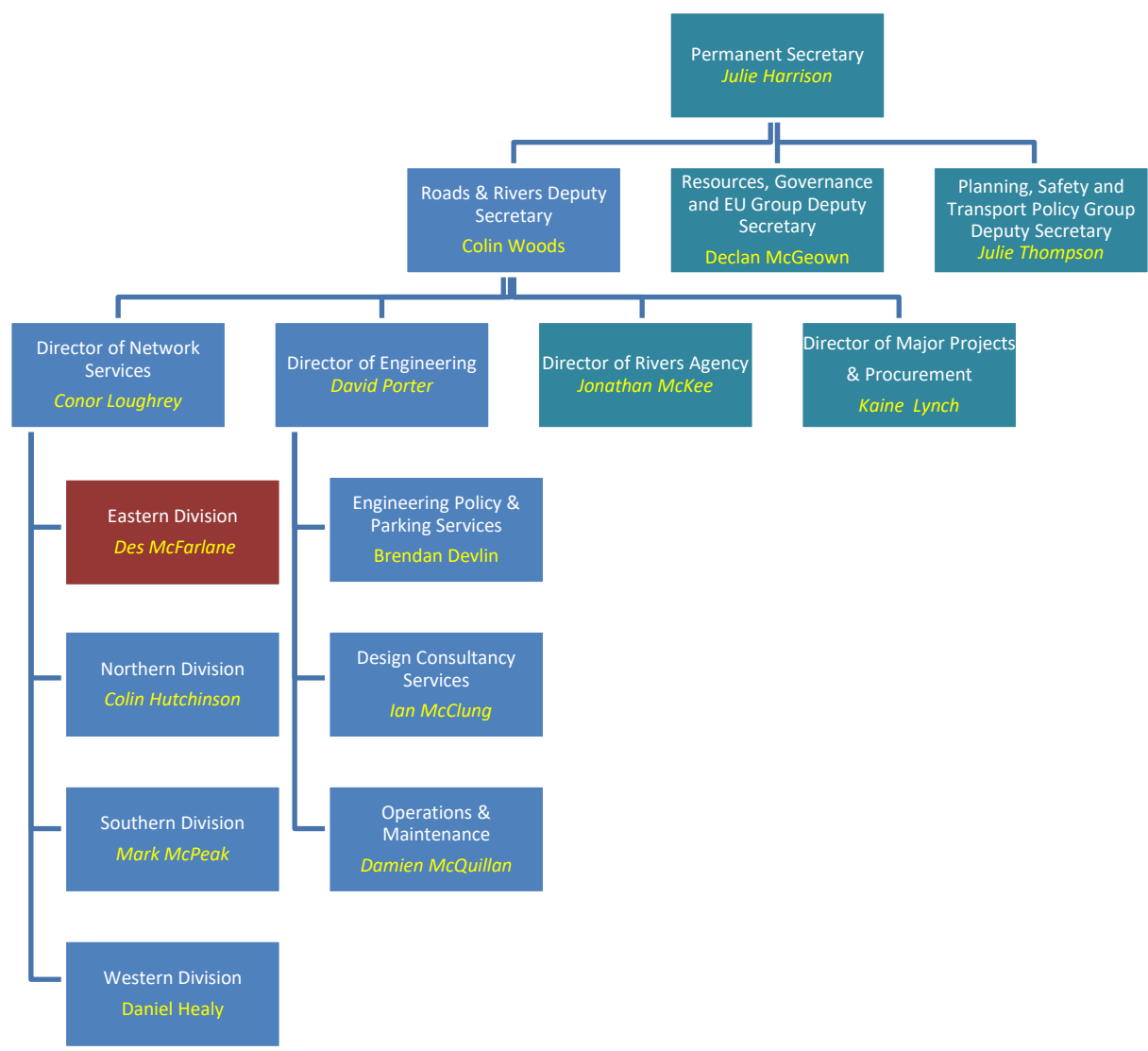


Figure 1 – Organisation Context

Eastern Division Management Structure



Des McFarlane
easternsecretariat@infrastructure-ni.gov.uk
Divisional Roads Manager



Graeme Salmon (90526238) graeme.salmon@infrastructure-ni.gov.uk
Network Traffic and Street Lighting

Traffic Management minor improvements, pedestrian priority, traffic orders, signing, collision remedial schemes, Street Lighting, resident and disabled parking, car parks and pay and display spaces, cycling and traffic calming. BRT infrastructure delivery and QBC & bus priority, 'Park and Ride schemes.



Celine Duff (90526273) celine.duff@infrastructure-ni.gov.uk
Network Planning

Development Control, Private Streets and Transport Assessments.



Roy Gordon (9025 4500) roy.gordon@infrastructure-ni.gov.uk
Network Transport Telematics

Traffic signal control, operation of the Traffic Information and Control Centre, Traffic and travel information and European projects INSTANT and STREETWISE.



Christine Tolerton (Acting) (90589769)
christine.tolerton@infrastructure-ni.gov.uk
Business Support

Financial control, land acquisition and disposal, retained human resources, building management and office supplies, council reports, business plan and communications.



Paul King (90526187) paul.king@infrastructure-ni.gov.uk
Network Development / Strategic Route Improvements/Blue-Green

Minor works programme, maintenance and strengthening of structures, Forward Planning, Developing and progressing Strategic Highway Improvements within Eastern Division



Gabriel Doherty (Acting) (92626600) gabriel.doherty@infrastructure-ni.gov.uk
Network Maintenance

Maintenance of adopted roads and footways including inspections, resurfacing, drainage, grass cutting and weed control, winter gritting and liaison with the utility companies.

Belfast / Lisburn & Castlereagh City Council area – Key Statistics

Roads infrastructure	Eastern Division	Lisburn & Castlereagh City Council area	Belfast City Council area
Length of public road (km)	2,564	1427	1138
Length of footway (km)	3,103	937	2166
Number of bridges	355	229	126
Number of street lights	68,532	22,811	45,721
Number of car parks	5	2	3
Number of car parking spaces	1,569	240	1329

WHAT WE DO

Maintaining the road network

Structural maintenance

Maintaining the network in a safe and serviceable condition remains one of our highest priorities.

Structural maintenance includes:

- the resurfacing and surface dressing of roads and footways;
- the repair of surface defects, such as potholes and broken flagstones; and
- the replacement and repair of road gullies, culverts and manholes.

Within the Eastern Division area in 2021/22 we:

- invested £15.21 million on structural maintenance;
- resurfaced 79.62 lane km of the road network; and
- resurfaced 28.07 km of footways.

Condition of the network

Monitoring the condition of our road network is an essential part of planning maintenance work and, in order to detect deterioration at an early stage, we undertake a number of annual road condition surveys using specialist vehicles to measure the strength, surface condition and skidding resistance of our roads.

In 2021/22, 93.2% of the motorway and trunk road network had a residual life of more than 5 years compared to a target of 85% respectively. The information from the survey gives us an indication of areas of the road network that require further investigation and are likely to require maintenance.

Routine maintenance

Routine maintenance is important, both to enhance user safety and to help prevent more significant and costly maintenance problems building up over time.

In Eastern Division during 2021/22 we:

- invested around £1.4 million replacing road markings, cutting grass verges to maintain visibility, emptying gullies and maintaining or replacing safety barriers, and maintaining street trees, verges and fences; and
- repaired 25,353 road defects following inspections.

Managing the road

The Traffic Information and Control Centre (TICC) is located within Belfast City Council area and from this location DfI Roads manages:

- 264 sets of traffic signal controller junctions;
- 257 sets of traffic signal controlled pedestrian crossings;
- 45 motorway gantries;
- 74 motorway Variable Message Signs; and
- use approximately 190 CCTV cameras to monitor the road network in real time.

We also disseminate real time travel information through the use of Social media:

- with 67,500 followers on Twitter;
- almost 760,000 unique users on Trafficwatchni.com website in 2021/22; and
- approximately 2600 users registered to receive emergency e-mail alerts.

We manage the road network to promote its safety and efficient operation. We have continued to make use of the latest technology and traffic management techniques to improve road safety, provide facilities for all road users, and effectively manage the network. This has included:

- monitoring and management of traffic signal timings to ensure they remain optimised for prevailing traffic conditions;
- responding to at least 98% of urgent traffic signal faults within 24 hours;
- the use and extension of traffic control and monitoring systems;
- the introduction of Puffin crossings;
- the provision and management of motorway control systems;
- operate a Service Level Agreement with PSNI to manage critical incidents on the Strategic Road Network to ensure all incidents are dealt with safely and efficiently;
- the supply and management of road traffic signs;
- the internal dissemination of collision records to help target areas of safety concern;
- the provision of accurate and reliable traffic information to the public including replies to traffic count queries and the provision of the annual traffic count census report; and
- future-proofing the road network to support growth in Intelligent Mobility and Connected Vehicles.

Within Eastern Division during 2021/22 we:

- provided pre-trip information on the trafficwatchNI website, www.trafficwatchni.com, radio broadcasts and social media. The number of CCTV cameras displayed on trafficwatchNI increased to 140 with a reduced refresh rate of two seconds;
- completed the upgrade of traffic signals at 6 signalised junction;
- completed the upgrade of 4 pedestrian crossings;
- commenced the Phase 2 upgrade of our Urban Traffic Control System (UTC) to ensure the system remains robust and secure and continues to maximise the efficiency of the signalised network. The upgrade will move the system onto a cloud-hosted environment removing hardware vulnerabilities in the Control Centre but also enabling access to the system remotely should the Control Centre become unavailable;
- completed part of our UTC upgrade to STRATOS which helps ensure the system remains robust, cyber secure and user friendly;
- designed further enhancements to the trafficwatchni website to increase sources of information displayed and to allow personalisation;
- commenced work to future-proof the road network by upgrading instation networks to support growth in Intelligent Mobility and Connected Vehicles;
- commenced the upgrade of the Automatic Number Plate Recognition devices on the network;

- purchased new equipment to replace some of the aging infrastructure currently on the network;
- successfully piloted an improved communication systems with our Electronic Messaging Signs along the A1 to continue to provide reliable and timely traffic information to Road Users;
- commissioned ITS (variable message signs and CCTV) on the A6 Randlestown to Castledawson scheme;
- monitored traffic signal timings to ensure they are appropriate for the prevailing traffic conditions; and
- utilised TICC's communications and control infrastructure together with the CCTV network to ensure traffic flows are monitored and effectively managed on the urban and motorway networks.

Winter Service

The aim of winter service is to help, as far as practicable, main road traffic to move safely and freely in wintry conditions by spreading salt at the most effective times.

Eastern Division has a fleet of 23 gritters and over 160 personnel available to salt approximately 1,306km of main roads.

There were 52 call-outs this year, when around 8,563 tonnes of salt was used, at a cost of approximately £15k per call-out, to treat all roads on the salting schedule. Eastern Division completed 96% of winter salting actions within 4 hours.

Our total winter service expenditure for 2021/22 was £782,005.

Emergency Response Service

We have procedures in place to assist with roads related emergency incidents to ensure a response, 24 hours a day, 7 days a week.

Our emergency response procedures are supported by a well-established reporting system to gather operational information from across Northern Ireland during an emergency. A lead communicator is available out of hours all year round to ensure that the latest news on road conditions is available to the travelling public and we have enhanced the trafficwatch website to enable the lead communicator to keep this information updated including Social Media System and Twitter.

Development Control and Private Streets

Development Control staff act as consultee to Planning Service, providing advice on road safety, traffic progression, transportation, roads layout/standards and policy compliance. During the 2021/22 financial year, Eastern Division dealt with over 2,250 planning application consultations and processed an average of 49% of these within 15 working days. In relation to new housing developments, 5.5km of Private Streets have been determined in 2021/22. This means that if and when the streets are built to the agreed layout and standard, they will be adopted into the public roads network. 52 new development sites have started since April 2021 representing approximately 3km of new roads and footways. At 31 March 2022, we held £27M in bonds, and during 2021/22, £4.6M of new bonds were processed with £3.2M released on adoption.

Street Works

Our road network is a major public asset valued at over £32 billion. It accommodates a network of underground pipes and cables, which deliver key services to the public including water supply, wastewater disposal, electricity, gas and telecommunications.

Utility companies have the right to open the public road to place or maintain their equipment. In 2021/22, there were 51,575 utility company road openings across Northern Ireland, with some 11,194 in Eastern Division. We work closely with utility companies to minimise disruption caused by street works and ensure better quality reinstatements.

Our Inspectors in Eastern Division have carried out over 3,137 visits to street works sites to inspect work in progress and completed reinstatements.

Improving the Road Network

Major Road Improvements

Network Development Section progresses the development of major road improvement schemes in the Strategic Road Improvement Programme. Delivery of these schemes is dependent on funding levels envisaged through the Investment Strategy for Northern Ireland 2011-21 and future budget settlements.

In Eastern Division the development of the York Street Interchange continues:

- the procurement process to award a contract for the detailed design phase of this scheme was halted in early 2017 as result of a legal action. This legal action concluded in September 2019, with the award of contract being set aside;
- in July 2020 the Minister announced an external review into the scheme to provide assurance on how and to what extent the scheme reflects key Ministerial, Executive and Council objectives and priorities. This included interviews with stakeholders and was conducted in November 2020;
- in March 2021 the Minister announced the outcome of the review, accepting the six recommendations from it and outlined proposals to address them. Consultants were asked to carry out some further work, particularly around place making and to maximise ambition in terms of what can be delivered for communities, connectivity and the wider living places agenda;
- this work has completed and the final report provides a number of proposals to strengthen the placemaking and active travel provision of the York Street Interchange project advising that additional measures could be implemented in tandem with it, to maximize the benefits for communities. The report recommends that three of the enhancement options are further developed and refined to allow an informed decision to be taken on the way forward. Work is ongoing to refine the shortlisted options, explore implementation issues and engage further with stakeholders; and
- The Placemaking and Active Travel Review report can be viewed at the following website. <http://www.yorkstreetinterchange.com/>

The commencement of construction for the York Street Interchange will be dependent on the satisfactory completion of an economic assessment, completion of the statutory process and subject to funding being made available in future budget settlements.

Bridge Strengthening

DfI Roads regularly inspects its stock of bridges and other structures on the public road network.

Last year across Eastern Division we inspected 132 structures and carried out maintenance and repair work to 11 structures. In 2021/22 we spent a total of £259k on strengthening and maintaining our current stock of bridges, culverts and retaining walls.

Street Lighting

We provide and maintain street lighting on all adopted roads in urban areas and in certain circumstances, on rural roads.

In 2021/22 we spent £8.8 million installing new and maintaining existing lighting systems in Eastern Division. This excludes the energy costs, which amounted to £4.1 million.

While budget constraints have meant that the Department has faced periods of significant street lighting resource pressures over the last several years, we are pleased that last year and in this new financial year the Division has been allocated funding to ensure a full repair service for street lighting.

Customer Service

DfI Roads aims to inform, consult and involve customers by:-

- supplying up-to-date information through our publications, at shows and exhibitions and via our website <http://www.drni.gov.uk>;
- listening to customer needs; and
- remaining open, transparent and visible at all times.

We publish a wide range of information leaflets on specific road schemes and on the services we provide. Our free newspaper, "On the Move", is published twice a year and distributed through our local offices and public libraries.

We provide up-to-date travel news through our travel information website www.trafficwatchni.com and our traffic hotline for Greater Belfast on 08457 123321. Traffic information is updated at 10 minute intervals and broadcast on BBC Radio Ulster during peak times.

During the development phase of major roads projects, we consult with a wide range of stakeholders, including elected representatives and the public and, particularly, those likely to be directly affected by the works. We hold exhibitions at local venues and inform the public through press articles, leaflet drops and individual visits, as necessary.

During 2021/22, we received 4895 written enquiries from the general public and responded to 74% of these within 15 days.

Contact DfI Roads Eastern Division

DfI Roads Service
Annexe 7, Castle Buildings
Stormont Estate, Upper Newtownards Road
Belfast, BT4 3SQ

Email- easternsecretariat@infrastructure-ni.gov.uk

Telephone- 03002007899

2.0 ADDRESSING CLIMATE CHANGE AND SUPPORTING SUSTAINABLE TRAVEL

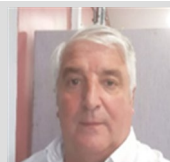
Principal Engineer – Paul King (90526187)

paul.king@infrastructure-ni.gov.uk

He is supported by the following staff:

**Works and Structures- Girvin Miskimmin (9025 4043)
(Job sharing)**

girvin.miskimmin@infrastructure-ni.gov.uk



This team is responsible for minor road improvement works and Structures.

Strategic Road Improvement 2 – Vacant

This team is responsible for progressing the development of the York Street Interchange Scheme.

**Strategic Road Improvement 1 – Basil Hassard (9052 6168)
(Job sharing)**

basil.hassard@infrastructure-ni.gov.uk



This team is responsible for development of the Tillysburn Park & Ride scheme, A55 Knock Road widening, Sydenham By-pass widening, the M1 / A1 Link at Sprucefield and A1 Improvements (Hillsborough).

**Works and Structures – Lionel Walsh (9052 6273)
(Job sharing)**

lionel.walsh@infrastructure-ni.gov.uk



This team is responsible for development of the Tillysburn Park & Ride scheme, A55 Knock Road widening, Sydenham By-pass widening, the M1 / A1 Link at Sprucefield and A1 Improvements (Hillsborough).

Blue / Green Active Travel - Charles Dickinson (90526280)

charles.dickinson@infrastructure-ni.gov.uk



This team manages active travel with an increasing level of investment being targeted at delivering a higher standard of walking and cycling infrastructure.

2.1 BLUE / GREEN SCHEMES**2022 /23 Works Completed**

16

<i>Scheme</i>	<i>Status</i>
Blaris Greenway Planting – Blaris Road to Sprucefield P&R	Completed
Comber Greenway Planting – Additional sites	Completed
Comber Greenway widening – Billy Neill Playing Fields to Enler River Bridge	Completed

BLUE / GREEN SCHEMES**2022/23 Programme of Works**

<i>Scheme</i>	<i>Status</i>
West Belfast Greenway – Dunmurry / Kilmakee link to Lagan Tow Path	Feasibility Stage
Millreagh Estate Linkage to Upper Newtownards Road - Cycle and Pedestrian access route / ramp	Feasibility Stage
Crumlin to Glenavy B12 – Shared use path	Feasibility Stage

2.2 M1/A1 LINK AT SPRUCEFIELD

The Regional Development Strategy (RDS) identifies the M1 and A1 as one of the five key transport corridors, by forming part of the Eastern Seaboard Corridor, running from Larne to Belfast and on to Dublin. The Belfast Metropolitan Transport Plan (BMTP) also recognises the strategic significance of this route and the existing congestion problems on the M1 and at the M1/A1 junction.



The proposed scheme, which is included in the Strategic Road Improvement Programme, will provide a high standard link between the M1 motorway and the A1. It will be of major benefit to the strategic traffic in reducing journey times by avoiding delays in the Sprucefield area. It is intended that the proposal will also consider congestion at the roundabout junction on the A1 at Hillsborough.

DfI Roads commissioned consultants to consider a range of options and an evaluation of all of the viable options for capacity enhancement along this route. This first stage of this has been completed and the findings published in a Stage 1 Report, which determined route corridors within which further options will be examined.

Given the ongoing work on Transport Plans for Local Development Plans, no further work on this scheme development is being carried out at present.

2.3 A1 JUNCTIONS PHASE 2

This proposal, which is estimated to cost in the range of £65-75m (currently under review), involves the construction of four grade separated junctions (flyovers) to facilitate the closing up of all openings in the central median and installation of a continuous central median safety barrier along a 25 km stretch of the A1 dual carriageway between Hillsborough Roundabout and Loughbrickland, improving road safety for all road users on the A1.

The grade separated junctions will be located at:

- Listullycurran Road
- Gowdystown Road
- Skeltons Road / Drumneath Road
- Waringsford Road

In addition, the proposal includes the provision of a northbound on-slip at Castlwellan Road at Banbridge, a link between the existing underpass junction at Hillsborough Road, Dromore and Milebush Road and the closing of nine minor road junctions along this section of the A1. All other roads will then operate on a left in - left out basis. A number of Private Accesses onto the A1 are also proposed for closure.

The Environmental Impact Assessment Report (EIAR) and draft Statutory Orders were published in March 2019 and the Public Inquiry into the scheme was held in March 2020. The Public Inquiry Inspector issued his report to the Department on 19 October 2020. Following the publication of the Departmental Statement on 28 January 2021, the Statutory Orders for the scheme were then made, with the Stopping Up (of Private Accesses) Order coming into operation on 24 June 2021 and the Direction Order on 16 July 2021.

On-site works for the advance ground investigations are now complete and some additional archaeological investigations will be carried out this autumn. Due to a change in design standards a modification to the type of safety barrier, from wire rope to a concrete barrier, will be implemented along the full extent of the scheme. This design change has been incorporated into the economic appraisal (business case) for the scheme. Work on the economic appraisal, which has included a review of the cost estimate for the project, is well advanced and is expected to be complete soon with a submission to the Department of Finance seeking their approval.

John O'Dowd, when he was Minister for Infrastructure, took the decision to commence the preparation of contract documents for the scheme in readiness for moving forward to procurement at a future date. It is anticipated that the contract documents will take approximately 10 months to prepare. Subject to the availability of funding in future years for the construction phase, the tender process for the scheme could then commence and it would likely take 12 months to reach contract award stage. However, the absence of an agreed 3-year Budget means that the timescales for commencing the tender process and moving to construction remains uncertain.

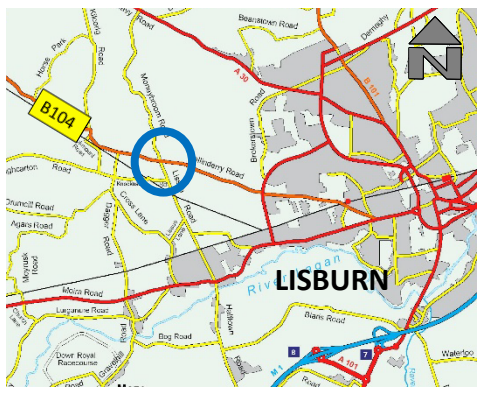

Additional scheme information is available at: <https://www.infrastructure-ni.gov.uk/articles/a1-junctions-phase-2-overview>

2.4 A1 HILLSBOROUGH TO SPRUCEFIELD

Separately, but as for the A1 Junctions Phase 2 scheme (Hillsborough to Loughbrickland), a feasibility study has been carried out on the section of the A1 between Hillsborough and Sprucefield. This was to consider the potential closure of central median crossings and provision of central median barrier where possible. The outcome of this study is being considered further.

2.5 MINOR WORKS

2022/23 Programme of Works

Scheme	Status
<p>Ballinderry Road / Lissue Road / Moneybroom Road, Lisburn Sightline Improvements.</p> <p>Scheme is to improve sightlines to the right and left hand side of Lissue Road onto the B104 Ballinderry Road and to the right hand side of Moneybroom Road onto the B104 Ballinderry Road.</p> <p>Scheme design is complete and accommodation works and land acquisition have been agreed. Scheme programmed to commence on site at the start of October 2022 with works scheduled for 12 weeks.</p>	<p>*Programmed</p>
<div style="display: flex; justify-content: space-around;">   </div>	
<p>Millreagh Drive, Dundonald.</p> <p>Provision of a footway link between Millreagh Drive and Carrowreagh Road, Dundonald.</p> <p>Scheme design is complete and land acquisition is being finalised.</p>	<p>*Programmed</p>

*carried over from 2021 / 22 programme.

2.6 MAINTENANCE OF STRUCTURES

2022/23 Works Completed

Scheme	Status
PRINCIPAL INSPECTIONS OF BRIDGES AND CULVERTS	
Structure No 20213 – Dundonald Footbridge	Completed
Structure No 20277 – Harpers Bridge	Completed
Structure No 20287 – Three Town Bridge	Completed
Structure No 20288 – Gransha Road	Completed

Scheme	Status
Structure No 20289 – Lisleen Bridge	Completed
Structure No 20305 – Mill Road West, B'Coan.	Completed
Structure No 20307 – Charity Bridge	Completed
Structure No 90026 – Ballykine Bridge	Completed
Structure No 90220 – Drumbeg Road	Completed
Structure No 90283 – Hunthill Road	Completed
Structure No 90392 – Derriaghy Halt, Footbridge	Completed
Structure No 90451 – Magheralave Road, Disused Railway Arch	Completed
Structure No 90461 – Mullaghcarran Road	Completed
Structure No 90462 – Mullaghcarran Road	Completed
Structure No 90467 – White Lane	Completed
Structure No 90492 – Ballydonaghy Bridge	Completed
Structure No 90493 – Knockcairn Bridge	Completed
Structure No 90666 – Ballyskeagh Footbridge	Completed
REMEDIAL WORK ON MASONRY STRUCTURES	
Structure No 90037 – Upper Ballynahinch Road, Legacurry – Infill to Structure	Completed

MAINTENANCE OF STRUCTURES**2022/23 Programme of Works**

Scheme	Status
PRINCIPAL INSPECTIONS OF BRIDGES AND CULVERTS	
Structure No 20218 – Beaully Drive Culvert	Programmed
Structure No 20280 – Manse Road	Programmed
Structure No 20306 – Mill Road West, P'Burn	Programmed
Structure No 20314 – Cairnshill Subway	Programmed
Structure No 90148 – Black Bridge	Programmed
Structure No 90207 – Paddy's Bridge	Programmed
Structure No 90230 – Youngs Bridge, Maze	Programmed

Scheme	Status
Structure No 90238 – Queens Road, Subway	Programmed
Structure No 90242 – Bells Bridge	Programmed
Structure No 90243 – Wolfendens Bridge	Programmed
Structure No 90248 – Hilden, Disused Canal	Programmed
Structure No 90249 – Hilden Bridge	Programmed
Structure No 90253 – Belfast Road	Programmed
Structure No 90254 – Lambeg Canal Bridge	Programmed
Structure No 90255 – Magherlave Road (railway)	Programmed
Structure No 90256 – Ballinderry Road (railway)	Programmed
Structure No 90286 – Stoneyford Bridge	Programmed
Structure No 90306 – Leap Bridge	Programmed
Structure No 90436 – Maze Bridge	Programmed
Structure No 90437 – The New Bridge	Programmed
Structure No 90441 – Lisburn Road	Programmed
Structure No 90463 – Dunygartan Road	Programmed
Structure No 90482 – New Mill Bridge	Programmed
Structure No 90522 – River Road	Programmed
Structure No 90601 – Glenavy Road	Programmed
Structure No 90657 – Springmount Road	Programmed
Structure No 90670 – The Cutts Derriaghy	Programmed
REMEDIAL WORK ON MASONRY STRUCTURES	
Structure No 20216 – Quarry Corner, Dundonald – Replacement of Culvert	Programmed
Structure No 90282 – Whitemountain Road – Weathering and Silting Obstructions	Programmed
Structure No 90414 – Knockmore Road, Bridge – Parapet Upgrade	Programmed
Structure No 90436 – Maze Bridge – Masonry Repairs and Vegetation Removal	Programmed
Structure No 90464 – Knocknarea Bridge – Parapet repairs and Vegetation Removal	Programmed
Structure No 90544 – Glen Road, Hillhall – Ingress of Water and Parapet Works	Programmed

<i>Scheme</i>	<i>Status</i>
OTHER ANCILLARY WORKS	
Hillsborough Road, Dromara – Repairs to Retaining Wall	Programmed
Prince William Road, Lisburn – RRRAP Assessment for VRS	Programmed
Vegetation Removal from 6No Road over Rail Structures	Programmed

3.0 NETWORK TRAFFIC AND STREET LIGHTING

Principal Engineer – Graeme Salmon (9052 6238)

graeme.salmon@infrastructure-ni.gov.uk

He is supported by the following staff:

Traffic Management 1 – Rachel Kidd (Acting) (90526188)

rachel.kidd@infrastructure-ni.gov.uk

This team deals with traffic improvement schemes in Belfast.

Traffic Management 2 – Graham Campbell (Acting) (90526191)

graham.campbell@infrastructure-ni.gov.uk

This team deals with traffic improvement schemes in Lisburn and Castlereagh and collision remedial schemes in all council areas.

Traffic Management 3 – Stephen McMeekin (9052 6245)

stephen.mcmeekin@infrastructure-ni.gov.uk

This team is responsible for residents’ parking, development of car parking, cycle measures and traffic calming.



Street Lighting - Evans Gibson (9052 6266)

evans.gibson@infrastructure-ni.gov.uk

This team is responsible for Street Lighting and the illumination of signs.



Transportation - Harry Armstrong (9052 6256)

harry.armstrong@infrastructure-ni.gov.uk

This team is responsible for delivery of BRT Infrastructure, the Quality Bus Corridor (QBC) programme, other bus priority measures and Park and Ride.



3.1 COLLISION REMEDIAL**2022/23 Programme of Works**

<i>Scheme</i>	<i>Status</i>
Upper Galwally / Bradford Court / Forestside junction – Control of right turn within the signal phasing	In Progress
B2 Ballynahinch Road / Hillsborough Road Junction, Ballykeel – High Friction Surfacing	Programmed

3.2 20MPH SCHOOL SPEED LIMITS**2022/23 Works Completed**

<i>Scheme</i>	<i>Status</i>
TRANCHE 2	
Ballymacash Primary School - Brokerstown Road, Lisburn	Completed
St Coleman's Primary School - A1 Queensway, Lambeg, Lisburn	Completed
Ballycarrickmaddy Primary School - Killultagh Road, Lisburn	Completed
Largymore Primary School - Mercer Street, Lisburn	Completed
Dromara Primary School - Dromara	Completed

3.3 PEDESTRIAN MEASURES**2022/23 Works Completed**

<i>Scheme</i>	<i>Status</i>
McKinstry Road Roundabout improvement, carriageway realignment and resurfacing to provide controlled pedestrian crossings on three legs of the junction	Completed
A1 Queensway at Hilden, Lisburn - Provision of Controlled Crossing Facility	Completed

PEDESTRIAN MEASURES**2022/23 Programme of Works**

<i>Scheme</i>	<i>Status</i>
Bells Lane, Queensway, Lisburn – Dropped Kerbs and Tactile Paving	At Design Stage
A1 Queensway, St Colmans, Lisburn – Puffin Crossing	At Design Stage
Glen Road, Glenavy – Pedestrian Island	Programmed

3.4 TRAFFIC SCHEMES**2022/23 Programme of Works**

25

<i>Scheme</i>	<i>Status</i>
Dromore Road, Hillsborough – Central Hatching and Edge Lines	Programmed
Hillhall Road, Lisburn at Presbyterian Church – Charcoal High Friction Surfacing	Programmed

3.5 TRAFFIC SIGNS AND INFORMATION 2022/23 Works Completed

<i>Scheme</i>	<i>Status</i>
Lower Ballinderry Road/ Haddockstown Road – marker posts	Completed
High Rise, Altona Road, Lisburn – Brown tourist signage	Completed
Tonagh Avenue, Craigmore Road, Lisburn – Replacement School Plate	Completed
Legaterriff Road, Upper Ballinderry – ‘Pedestrians crossing’ warning signs	Completed
Killynure Road West, A24 Ballynahinch Road, Carryduff – 40mph stickers to replace incorrect 30mph roundels	Completed
Dungoyne Park, Dundonald – Playground Warning Sign	Completed
Castle Street, Lisburn – 2 No. Pay and Display Ticket Zone signs	Completed
Green Road, Legacurry – Single Chevron Sign	Completed
Old Church Lane, Soldierstown Road – Junction Warning Signs	Completed
A1 Queensway, Grand Street – 30mph roundel	Completed
Dromore Road, Ballynahinch – 2 No. Hidden Dip Warning Signs	Completed
A30 Glenavy Road, Lisburn – Marker Posts, 40mph Repeater Sign	Completed
Hillsborough Road, Dromara – 30mph stickers to replace faded 30mph roundels	Completed
Ardtanagh Road, Dromore – Replacement ‘STOP 100 yds’ plate	Completed
Clarehill Road, Moira – Series Of Bends Sign	Completed
Ballygowan Road, Pattersons Road, Hillsborough – 2 No. junction warning signs	Completed
Trench Road, Kesh Road, Maze – Enlarging of Existing 30mph Signage	Completed
Magheraconluce Lane, Hillsborough – Chevron Sign	Completed

TRAFFIC SIGNS AND INFORMATION 2022/23 Programme of Works

26

Scheme	Status
Knockbracken Road – Yellow backing board bend warning signs.	Programmed
Hospital Road, Belfast – DVA Test Centre Signage	Programmed
Glenside Road, Belfast – Poleglass Direction Sign	Programmed
Gransha Road, Dundonald – Relocate Give Way Sign	Programmed
Hydebank Play Park, Newtownbreda Road, Belfast – Playground Warning Signs	Programmed
Church Road, Temple – Pedestrian Crossing Warning Signs	Programmed
Budore Road, Divis Road, Belfast – Advanced Give Way Sign, Marker Posts and Yellow Backing Board Give Way Sign	Programmed
Baronscourt Road/ Link, Carryduff – No Through Road Sign	Programmed
94 Dromore Road, Ballynahinch – Crossroad Warning Sign	Programmed
Burren Road, Bawn Hill Road, Ballynahinch – Staggered Junction Warning Sign	Programmed
Carricknadarrieff Road, Annahilt – Hidden Dip Warning Sign	Programmed
112-121 Comber Road, Hillsborough – Series Of Bends Sign	Programmed
Newtownbreda Road, Belfast – New Children playing/ playground signs	Programmed
Gransha Road, Dundonald – 30mph sticker to replace 30mph roundel	Programmed
Cairnshill Close, Belfast – No Through Road Sign	Programmed
A3 Moira Road / Cross Lane – Junction Left Warning Sign	Programmed
Old Road, Maghaberry (Maghaberry Bound) – Crossroads Warning Sign	Programmed
Knocknarea Road, Lisburn - Temporary Yellow Narrow Bridge Warning Sign	Programmed*
Bensons Road, Lisburn – Bend Warning Sign	Programmed*
Kilcorrig Road, Lisburn – Replacement Weight Limit Sign	Programmed*
Lissue Road, Ballinderry Road, Lisburn – Existing Bridge Signage on Yellow Backing Boards	Programmed*
Stoneyford Road, Lisburn – Replacement Marker Posts	Programmed*
A24 Carryduff Road, Bresagh Road, Lisbane Road – Staggered Junction Warning Sign	Programmed*
Hillhall Road, Braniel Road, Lisburn – Junction on Bend on Left Warning Sign	Programmed*

3.6 DROPPED KERBS/MOBILITY RAMPS 2022/23 Programme of Works

Scheme	Status
Wallace Avenue entrance to SERC, Lisburn – Dropped kerbs at 3 locations	Programmed
Maralin Avenue, Lisburn – Dropped Kerbs at 3 locations	Programmed
Old Hillsborough Road, Lisburn – Dropped kerbs at several locations	Programmed

3.7 CARRIAGEWAY MARKINGS

2022/23 Works Completed

Scheme	Status
Killultagh Walk, Killultagh Avenue and Killultagh Avenue, Killultagh Green – Give Way Markings	Completed
Dromore Road, Ballynahinch – 4 No. SLOW road markings	Completed
Divis Road, Belfast – SLOW road marking	Completed
A3 Lisburn Road, Meadow Road, Lisburn – SLOW road markings	Completed
Magheraconluce Road, Cargygray Road, Annahilt – 2 No. SLOW road markings	Completed
Dromore Road, Cluntagh Road, Ballykeel – SLOW road marking	Completed
Agars Road, Lisburn – Edge Of Carriageway Marking	Completed
Dromara Road, Hillsborough – SLOW road marking	Completed
94 Dromore Road, Ballynahinch – SLOW road marking	Completed
Burren Road, Bawn Hill Road, Ballynahinch – SLOW road marking	Completed
Carricknadarriff Road, Annahilt – SLOW road marking	Completed
Trinity Terrace, Lisburn – I Bar Marking	Completed
Mullaghcarron Road, Maghaberry – SLOW Road Marking	Completed
Belsize Road, Elmwood Park – 15m Corner Restrictions	Completed
Ballykeel Road, Moneyreagh – I Bar Marking	Completed

CARRIAGEWAY MARKINGS**2022/23 Programme of Works**

28

Scheme	Status
A26 Moira Road/ Ballinderry Road – Double white line system installed at right turn pockets	Programmed
Belsize Road/ Elmwood Park, Lisburn – 15 metre corner restrictions	Programmed
Bensons Road, Lisburn – Edge of carriageway road marking	Programmed
No 114 and 124 Dromore Road, Ballynahinch - SLOW road marking	Programmed
Annahilt – Red Patches and Roundels	Programmed
A30 Glenavy Road, Lisburn – SLOW road markings, 30mph roundel	Programmed
6 Church Lane, Hillsborough – I Bar Marking	Programmed
Glebe Road, Church of the Ascension, Annahilt – 2 No. SLOW road markings	Programmed
Ballymurphy Road, Ballynahinch Road – SLOW road marking	Programmed
Dromara Road, Ballykeel – 4 No. SLOW road markings	Programmed
Old Road, Maghaberry (Maghaberry bound) – SLOW road marking	Programmed
Prince William Road, Lisburn – Lane Designation Arrows	Programmed
Church Road, Temple – 2 No. SLOW road markings	Programmed
Knockbracken Crescent, Carryduff – I Bar Marking	Programmed
Killultagh Road, Ballycarrickmaddy – School Keep Clear	Programmed*
Stoneyford Road, Lisburn – SLOW road marking	Programmed*

3.8 LEGISLATION**2022/23 Works Completed**

Scheme	Status
Lisburn Street, Hillsborough – Second Electric Charging Bay	Completed
Rathdown Road, Lisburn – Single Yellow Lines	Completed
Mealough Road, Drumbo – New 40mph speed limit	Completed
Glen Road, Glenavy – New 40mph Speed Limit	Completed
Glen Road, Scroggy Road, Glenavy – New 30mph Speed Limit	Completed
Chapel Road, Glenavy – New 30mph Speed Limit	Completed
Lisburn Road, Glenavy – New 40mph Speed Limit	Completed

LEGISLATION

2022/23 Programme of Works

29

Scheme	Status
SPEED LIMITS	
A49 Old Ballynahinch Road -Lisburn side of Ravernet Bridge to Cargacreevy Road - 40mph speed limit	Programmed
Manse Road, Belfast – 40mph Speed Limit Extension	Programmed
Killultagh Road, Lisburn – 30mph Speed Limit Extension	Programmed
WAITING RESTRICTIONS	
Cairnshill Drive, Castlereagh – Extension of Double Yellow Lines	Programmed
The Cutts, Dunmurry – New Single and Double Yellow Lines	Objections received
Antrim Place, Lisburn – New Double Yellow Lines	Programmed
Linenhall Street, Lisburn – Proposed Loading Bay	Under Review
Rathdown Road, Lisburn – New Single Yellow Lines	Programmed
Divis Road, Belfast – New Double Yellow Lines	Programmed
Warren Park, Lisburn – New Double Yellow Lines	Programmed
WEIGHT RESTRICTIONS	
Hillsborough Weight Limit – 7.5T Restriction	Objections Received
TRAFFIC ORDERS	
Hillhall Road / Largymore Drive – Banning of Right Turn Movement	Programmed

3.9 DISABLED PARKING BAYS

2022/23 Programme of Works

Scheme	Status
68 Galway Park, Dundonald	Programmed
62 Galway Park, Dundonald	Programmed
31 Alanbrooke Avenue, Lisburn	Programmed
62 Hillview Avenue, Lisburn	Programmed
10 Tanners Court, Lisburn	Programmed
29 Roseville Park, Lisburn	Programmed

3.10 STREET LIGHTING

2022/23 Works Completed

30

Scheme	Status
REPLACEMENT SCHEMES	
Bresagh Road – Ulster Cottages	Completed
Edgcumbe Dr/Gardens/Park	Completed
Hambleden, Drumbeg	Completed
Kilmore Park Moira	Completed
Kilowen Grange	Completed
Millbrook – Roseville – Barley Hill, Hilden	Completed
Monument Park, Hillsborough	Completed
Moybrick Road and Grove, Dromara	Completed
Sandown Park, Lisburn	Completed
<i>Thiepval/Bentrim Road</i>	Completed
<i>Tonagh Area, Lisburn</i>	Completed
RETRO FIT SCHEMES	
Alanbrooke Avenue, Lisburn	Completed
Aldon	Completed
Beechill- Prospect Park	Completed
Beechdene	Completed
Castle Avenue	Completed
Coolsara & Sepon	Completed
Dalboyne	Completed
Fulmar- Corby	Completed
Glen Road, Glenavy	Completed
Harmony Drive, Lisburn	Completed
Hillsborough Area Wood Poles	Completed
Hollyburn - Glenbrae	Completed
Kennedy Drive, MV Park	Completed

<i>Scheme</i>	<i>Status</i>
Lakeland Manor, Annahilt	Completed
Limetree- Hollyburn	Completed
Lombard	Completed
Lyngrove, Glenavy	Completed
Mornington Area, Lisburn	Completed
Monaville	Completed
Mountain View	Completed
Plantation Road/Ave	Completed
Ridge-Barleywood Derriaghy	Completed
Thistlemount Park	Completed
Thornleigh	Completed
Tynedale	Completed
Whitla	Completed
Windmill Road, Hillsborough	Completed
Woodvale & Cornmill Dromara	Completed

STREET LIGHTING

2022/23 Programme of Works

<i>Scheme</i>	<i>Status</i>
Replacement Schemes	
Barnfield Road and Grange, Lisburn	Programmed
Belvoir Park and Crescent, Lisburn	Programmed
Birch Green & Willow Court, Dunmurry	Ongoing
Causeway End Park & Gardens, Lisburn	Programmed
Cherryvalley	Programmed *
Crumlin Road, Drumart Crescent, Ashcroft Way - Lower Ballinderry	Programmed
Danesfort, Earlfort and Kingsfort Lodge Moira	Programmed
Dromore Road, Hillsborough	Ongoing

Scheme	Status
East Link Road Castlereagh	Ongoing
Edenview Road Maghaberry	Programmed
Eglantine Park, Culcavy	Programmed
Eglantine Road, Crescent & Court, Lisburn	Programmed
Glebe Road, Glebe Manor Annahilt	Programmed
Glen Road Castlereagh	Programmed
Glenavy Road & Killulatgh Road, Lisburn	Programmed
Glen View Maghaberry	Ongoing
Gregg Streety/Mercer Street/Hillhall Road to RAB	Ongoing*
Hillhall Road	Programmed*
Hillhall Road to RAB	Ongoing*
Hillhall- Ballylesson junction	Ongoing
Hillview Avenue & Carrisbrook	Ongoing*
Hugenot Drive – Grand St Area, Hilden	Ongoing*
Island Kelly, Nettlehill, St Marks Wood	Programmed*
Kirkwood and Maysfield, Lisburn	Programmed
Legacurry	Programmed
Lower Ballinderry Road – North St – Peel Gardens	Programmed
Maghaberry Road/Old Road/Hammond Road, Maghaberry	Programmed *
Magheraconluce Road, Conluce and Blenheim , Annahilt	Programmed
Magheralave Grange, Manor and Court, Lisburn	Programmed
Magowan Park Annahilt	Programmed
Manor Drive, Church Lane Barrack Street, Lisburn	Programmed
Meeting Street, Rawdon & McCartney Place, Moira	Programmed
Milltown Road (House of Sport to Belvoir Rd)	Ongoing*
Moira and Lilburn Rd, Glenavy	Programmed
Moira Road , Moyrusk road, Church Lane, Lisburn	Programmed
Muskett Area, Carryduff	Ongoing

Scheme	Status
Oldfort and Deramore area Moira	Programmed
Priory Close, Lambeg	Programmed
Rathvarna Avenue/Mournview Park	Ongoing*
Richmond Court, Lisburn	Programmed
Riverside	Ongoing *
St John Park, Moira	Programmed
The Old Mill, Culcavy	Ongoing
The Meadows Trummery Lane & Heights, Maghaberry	Programmed
Wandswort Road	Programmed *
Waringmore and Lurgan Road Moira	Programmed
Woodside	Programmed
RETRO FIT SCHEMES	
Avonmore	<i>Ongoing*</i>
Ballymacash Drive, Lisburn	Ongoing
Bests Hill	Ongoing
Belsize, Sharry Drive & Coverdale, Lisburn	Ongoing
Belvoir Area	Programmed
Brerton Hollow/Crescent	Programmed
Brentwood Park	Ongoing
Carlton Hill	Programmed
Cairnburn Area	Ongoing
Carnreagh Road	Programmed
Catslemore Ave/Park	Ongoing
Cedar Grove/Knocknagoney Gardens	Ongoing
Cumberland Area	Ongoing
Derryvolgie Park, Lisburn	Ongoing
Drumbeg Drive	Programmed

Scheme	Status
Dunbeg Park Area, Hillsborough	Ongoing
Dundrod Drive	Programmed
Enler Park Central	Ongoing
Ferndene Road/Gardens Area	Ongoing
Greenwood	Ongoing
Grand Prix Park	Ongoing
Glebe Area, Moira	Ongoing
Glenmore Area	Ongoing
Glenside Park & Pinewood	Programmed
Glenview	Ongoing
Glenwood Park, Copse Row, Dunmurry	Programmed
Glenwood Green & Court, Lisburn	Ongoing
Gransha Road	Programmed
Hanwood Area	Ongoing
Hermitage, Culcavy	Programmed
Hilden Court, Lisburn	Ongoing
Hillhall Estate	Completed *
Hollybrook, Aghalee	Ongoing
Kileaton Place	Ongoing
Kilynure Area	Programmed
Kinross, Sperrin, Gortin	Ongoing
Kings Road	Programmed
Lambert Area	Ongoing
Laurel Wood-Brook- Lodge, Ballinderry	Ongoing
Largymore Link, Lisburn	Programmed
Lisburn Road, Moira	Programmed
Lynnwood Mews, Lisburn	Programmed
Magherlave Park	Ongoing *

Scheme	Status
Milltown Area Derriaghy, Lisburn	Ongoing
Mersey Street	Ongoing
Melmore Drive, Eaton Court, Railway Street, Dunmurry	Ongoing
Moyne Park	Ongoing
Pennington Park	Ongoing
Penworth Green, Lisburn	Ongoing
Purdysburn Village	Programmed
Redwood Area, Dunmurry	Ongoing
Roddens Crescent	Ongoing
Rosepark Area	Ongoing
Saintfield Road M1 RAB	Programmed*
School Road, Breda Road	Programmed
Soliderstown Road, Aghalee	Programmed
The Old Mill Heights, Culcavy	Programmed
Warren Park	Programmed
Wanstead Road	Ongoing
Windermere Area	Ongoing

*Carried over from 21/22

3.11 CYCLE MEASURES

2022/23 Programme of Works

Scheme	Status
No schemes identified to date	

3.12 TRAFFIC CALMING

2022/23 Programme of Works

Scheme	Status
No schemes identified to date	

It should be noted that all Traffic Calming schemes are subject to a legislative process and to the availability of funding before they can proceed.

The legislative process provides for representations / objections to be received on our proposals. Where residents do not support individual schemes or where objections are received, it may not be possible to deliver our intended programme. In this event substitutions, on a Division-wide basis, may be made throughout the financial year.

3.13 TRANSPORTATION MEASURES 2022/23 Programme of Works

Scheme	Status
Enhancement of McKinstry Road Roundabout to improve the pathway for Belfast Rapid Transit - Glider vehicles.	Design in process.
Cairnshill Park and Ride Extension – Provision of an additional 359 spaces	Awaiting land Acquisition. Construction to be carried out as part of BRT2
Sprucefield Park & Ride – New access arrangement to accommodate Knockmore Link Road.	Planning application submitted
Sprucefield Park & Ride – Provision of water main	Substantially complete
Ballygowan Road/St John’s Road – Footway link to bus stop.	Work request submitted
Ballygowan Road / Pattersons Road -Hardstand at Bus stop.	Work request submitted

4.0 NETWORK TRANSPORT TELEMATICS

Principal Engineer – Roy Gordon (9025 4500)

roy.gordon@infrastructure-ni.gov.uk

He is supported by the following staff:

Ian Duff (90 254518)

ian.duff@infrastructure-ni.gov.uk

This team is responsible for the day to day running of the Traffic Information and Control Centre. It is responsible for the installation, maintenance and operation of Intelligent Transport Systems (ITS) including traffic control on the urban and motorway networks and the provision of traffic and travel information.



Gary McCracken (90 254510)

gary.mccracken@infrastructure-ni.gov.uk

This team is responsible for the installation and maintenance of all traffic signals as well as NI wide contracts for the supply of traffic signs, school safety signs and vehicle activated signs.

The team is also responsible for the internal dissemination of collision records, the Road Safety Engineering Report and traffic counting including the publication of the Annual Traffic and Travel Information (Census) Report.



TICC
TrafficwatchNI
website

4.1 NETWORK TRANSPORT TELEMATICS

2022/23 Works Completed 38

Scheme	Status
TRAFFIC AND TRAVEL INFORMATION	
We will upgrade the TrafficwatchNI website to ensure it remains robust, secure and fit for purpose.	Phase 1 & 2 – Completed
We successfully increased the number of CCTV camera feeds to the website from 20 to 140. The refresh rate has also reduced from 30 seconds to 2 seconds.	Completed
We will upgrade our Automatic Number Plate Recognition (ANPR) Cameras on the network. The new ANPR cameras are high quality and use the latest optical recognition technology which will continue to provide reliable and timely journey times to Road Users.	Completed
URBAN CLOSED CIRCUIT TELEVISION (CCTV) CAMERAS	
We will continue to identify new locations where the provision of cameras will enhance the coverage of the CCTV network to improve traffic control capabilities.	Ongoing
TRAFFIC CONTROL SYSTEMS	
We will continue the rollout of Server to Server Bus priority on Quality Bus Corridors throughout Belfast.	Ongoing
We have upgraded our Urban Traffic Control System (UTC) to STRATOS which helps ensure the system remains robust, secure and user friendly.	Completed
We have researched and developed a bespoke communication channel between our UTC system and our motorway control system, thus increasing resilience of our systems.	Completed
TRAFFIC MANAGEMENT	
Utilise TICC's communications and control infrastructure together with the CCTV network to ensure traffic flows are monitored and effectively managed on the urban and motorway networks.	Ongoing
We will monitor traffic signal timings to ensure they are appropriate for the prevailing traffic conditions.	Ongoing
Purchased new equipment to replace some of the aging infrastructure currently on the network.	Completed
Signal junction upgrade at Ballynahinch Rd / Hillsborough Rd incorporating extra low voltage equipment and puffin crossing facilities	Completed

Scheme	Status
Controlled pedestrian crossing upgrade at Ballynahinch Rd @ Frankhill Park, Carryduff incorporating extra low voltage equipment and puffin crossing facilities	Completed

NETWORK TRANSPORT TELEMATICS**2022/23 Programme of Works**

Scheme	Status
TRAFFIC AND TRAVEL INFORMATION	
We will upgrade the TrafficwatchNI website to ensure it remains robust, secure and fit for purpose.	Phase 3 ongoing
We will continue to enhance the TrafficwatchNI website to ensure it remains robust, secure and fit for purpose. Currently we have plans to further increase the number of CCTV sites available on the website from 140 to 150.	Ongoing
URBAN CLOSED CIRCUIT TELEVISION (CCTV) CAMERAS	
We will continue to identify new locations where the provision of cameras will enhance the coverage of the CCTV network to improve traffic control capabilities.	Ongoing
TRAFFIC CONTROL SYSTEMS	
We will continue the rollout of Server to Server Bus priority on Quality Bus Corridors.	Ongoing
We will continue to upgrade and add to our Urban Traffic Control System (UTC) to ensure the system remains robust and secure.	Ongoing
We will commence design on IP to the Roadside for our Motorway network to enable growth in Intelligent Mobility and Connected Vehicles.	Ongoing
TRAFFIC MANAGEMENT	
We will monitor traffic signal timings to ensure they are appropriate for the prevailing traffic conditions.	Ongoing
We will utilise TICC's communications and control infrastructure together with the CCTV network to ensure traffic flows are monitored and effectively managed on the urban and motorway networks.	Ongoing
We have commenced a review of our ITS infrastructure to ensure that we are delivering the best service possible to the public.	Ongoing

Scheme	Status
We will seek to purchase and install new equipment and replace aging infrastructure on the network, when funds are available.	Ongoing
MOTORWAY NETWORK SAFETY	
We will undertake feasibility into replacing the end-of-life Motorway Emergency Roadside Telephone (ERT) system and subject to adequate funding commence design on a replacement system.	Ongoing
We will undertake feasibility into upgrading access to sites for maintenance personal and subject to adequate funding commence design on improving health and safety going forward.	Ongoing
We will improve communication resilience to assets on the network.	Ongoing
PEDESTRIAN MEASURES	
Controlled crossing equipment upgrade incorporating extra low voltage equipment and puffin crossing facilities at Hillsborough Rd @ Lagan Valley Hospital	Programmed

5.0 NETWORK MAINTENANCE

Principal Engineer – Gabriel Doherty (Acting) (9262 6600)

gabriel.doherty@infrastructure-ni.gov.uk

He is supported by the following staff:

Lisburn and Castlereagh Section Engineer - Joe Torney (Acting) (9262 6677)

Joe.torney@infrastructure-ni.gov.uk

40a Benson Street, Lisburn, BT28 2BG

The Section Office is responsible for contacts with the public and elected representatives, highway inspections, resurfacing, responsive repairs, routine maintenance, winter gritting, road opening consents and licenses, public liability claims and street works co-ordination with the utility companies.



Deputy Section Engineer – Alan Willis (Acting) (92626619)

alan.willis@infrastructure-ni.gov.uk

40a Benson Street, Lisburn, BT28 2BG

Support Services Manager- Bill Fulton(90526182)

bill.fulton@infrastructure-ni.gov.uk

This team is based at Castle Buildings, Stormont and is responsible for general co-ordination, bidding, allocating and monitoring finances, maintenance of safety fences, contract monitoring, statistics and enforcement.



5.1 CARRIAGEWAY RESURFACING 2022/23 Works Completed

42

Scheme	Status
From April 2022 to October 2022, 10.68km of carriageway was resurfaced in the Lisburn/Castlereagh area. This equates to 34,656 sq. m and includes the schemes listed below.	
RESURFACING SCHEMES	
Kensington Park	Completed
Largymore Drive	Completed
Lansdowne Park	Completed
Moneyreagh Road Phase 1	Completed
Carrowreagh Road	Completed
Mullaghcarron Road	Completed
Maghaberry Road Phase 1	Completed

CARRIAGEWAY RESURFACING 2022/23 Programme of Works

Scheme	Status
Maghaberry Road Phase 2	On site
Hornbeam Road	On site
Lilac Walk	On site
Linden Walk	On site
Johnston Park	On site
A26 Moira Road (TRN)	Programmed
Edentrillick Roads Phase 1	On site
Carnreagh Road	Programmed
Railway Street, Derriaghy	Programmed
Tullynore Road*	Programmed
Mullaghdrin Road East*	Programmed
Stockdam Road*	Programmed
Knockany Road*	Programmed

Scheme	Status
Begney Hill Road*	Programmed
Lough Road*	Programmed

* Roads Recovery Fund Scheme

5.2 FOOTWAY RESURFACING

2022/23 Works Completed

Scheme	Status
From April 2022, 1.965 km of footway was resurfaced in the Lisburn/Castlereagh area. This includes the schemes listed below.	
Kensington Park	Completed
Largymore Drive	Completed
Lansdowne Park	Completed
Moneyreagh Road Phase 1	Completed

FOOTWAY RESURFACING

2022/23 Programme of Works

Scheme	Status
Hornbeam Road	On site
Lilac Walk	On site
Linden Walk	On site
Johnston Park	On site
Carnreagh Road	Programmed
Railway Street, Derriaghy	Programmed
A24 Carryduff Road	Programmed

5.3 SURFACE DRESSINGS

2022/23 Works Completed

Scheme	Status
Irwinstown lane	Completed

<i>Scheme</i>	<i>Status</i>
Hillhead Road	Completed
Haddockstown Road	Completed
Brackenhill Road	Completed
Riverdale Road	Completed
Kilwarlin Road	Completed
Laverysbridge Road	Completed
Glen Road	Completed
Yewtree Hill Road	Completed
Brookmount Road	Completed
Y Bridge Road	Completed
Temple Road	Completed
Gortrany Road	Completed
Refords Lane	Completed
Old Church Lane	Completed
Lisnabilla Road	Completed
Dagger Road	Completed
Mckees Bridge Road	Completed
Drumlough Road	Completed
Ravarnet Road	Completed
Park Road	Completed
Woodvale Road	Completed
Quarterlands Road	Completed
Ballycoan Road	Completed
Gannon Road	Completed
Leverogue Road	Completed

<i>Scheme</i>	<i>Status</i>
Moss Road	Completed
Dunlady Road	Completed
Hillsborough Road	Completed
Gransha Road	Completed
Glenavy Road	Completed
Stoneyford Road	Completed
Ballinderry Road	Completed

5.4 DRAINAGE

2022/23 Programme of Works

<i>Scheme</i>	<i>Status</i>
40 Ballykeel Road	Programmed
Knockbracken Road	Programmed

5.5 VERGE STRENGTHENING SCHEMES 2022/23 Programme of Works

<i>Scheme</i>	<i>Status</i>
A3 Moira Road	Programmed
Edentrillick Road	Programmed

5.6 CARRAIGEWAY REFURBISHMENT 2022/23 Programme of Works

<i>Scheme</i>	<i>Status</i>
Rathvarna Avenue	Programmed
Rathvarna Drive	Programmed
Craigeith Drive	Programmed

5.7 LIAISON WITH UTILITIES**2022/23 Works Completed**

Scheme	Status
NORTHERN IRELAND WATER	
Service connection to customers	Ongoing
PHOENIX GAS	
Service connection to customers	Ongoing
VIRGIN MEDIA	
Service connection to customers	Ongoing
CABLE & WIRELESS	
Service connection to customers	Ongoing
POWER NI	
Service connection to customers	Ongoing
BT	
Service connection to customers	Ongoing

LIAISON WITH UTILITIES**2022/23 Programme of Works**

Scheme	Status
NORTHERN IRELAND WATER	
Service connection to customers	Ongoing
PHOENIX GAS	
Service connection to customers	Ongoing
VIRGIN MEDIA	
Service connection to customers	Ongoing
CABLE & WIRELESS	
Service connection to customers	Ongoing
POWER NI	
Service connection to customers	Ongoing

Scheme	Status
BT	
Service connection to customers	Ongoing

6.0 NETWORK PLANNING

Principal Engineer – Celine Duff (028 9054 1005)

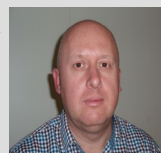
Celine.duff@infrastructure-ni.gov.uk

She is supported by the following staff:

Private Streets – Russell Moore (9052 8103)

russell.moore@infrastructure-ni.gov.uk

This team manages the Private Streets Determinations, 3(4c) License agreements, bonds, adoption certificates and liaison for Environmental Improvements for the Division. This team also provides administrative support to Divisional Network Planning.



Development Control Team 2- Stephen Cash (9262 6670)

stephen.cash@infrastructure-ni.gov.uk

This team deals with development control for the Lisburn & Castlereagh Council area including the review of associated Transport Assessments and Strategic/Significant Planning Applications.



Development Control Team 3 – Geoff Lawther (9052 6285)

geoff.lawther@infrastructure-ni.gov.uk

This team deals with development control for Belfast Council area including the review of associated Transport Assessments and Strategic/Significant Planning Applications.



Development Planning – Conleth Sloan (9052 6284)

conleth.sloan@infrastructure-ni.gov.uk

This team deals with development planning for the Division, Advice to Local Transport Plans and Community Plans, Titanic Quarter development control and input to regeneration/public Realm projects.



6.1 ADOPTIONS

Adoptions completed from last spring report

Location	Length Adopted (M)
Aikins Hill	87.5 linear metres of shared surface carriageway with associated footway, service strip and turning head (Causeway End Road to end).
Coopers Mill Avenue & Coopers Mill Link	278m of traditional carriageway and footways. 19m of raised table junction.
Danesfort Park	293m of traditional carriageway and footways, 247m ² of car parking area and 144m ² of remote footway.
Drumbeg Cottages (Enforcement site)	37.1 linear metres of shared surface carriageway with associated footway, hard margin and 159m ² of communal parking (Ballyskeagh Road to end).
Myrtledene Drive	60m of traditional carriageway including footways and turning head.
Royal Ascot Mews	125m of shared surface.
The Rose Garden (Enforcement site)	520 linear metres of traditional carriageway with associated footway, turning head and 9.5 linear metres of link footway (No. 1 to 69).
Waringfield Park	49.5 linear metres of shared surface carriageway with associated service strip and turning head (house No. 7 to end).

6.2 PLANNING APPLICATIONS

DfI Roads Development Management teams provide specialist information and transportation advice to Lisburn & Castlereagh City Council Planning Service or DfI Planning (as the case may be), on road related matters associated with proposed development applications.

Schedule of Members' Questions – Dfl Roads Division

51

	Member	Topic	Question
1	Cllr Jonathan Craig	Dfl Roads Division Presentation	When Milltown Avenue, Derrriaghy was resurfaced last year we were told that the resurfacing of Milltown Avenue, Milltown Gardens and Milltown Park were to be carried out this financial year. Can you please indicate when this will be done?
2	Cllr Jonathan Craig	Dfl Roads Division Presentation	Laurel way in Seymourhill is in a particularly bad condition needing constant repairs as you turn into the shops, is there any planned dates to resurface this?
3	Cllr Jonathan Craig	Dfl Roads Division Presentation	Both Cyprus Close and Hollymount in Seymourhill have been dug up by amenity companies so many times that the main road surface no longer exists but now consists of numerous joined up repairs. Is there any plans to resurface these areas? And if so when?
4	Cllr Jonathan Craig	Dfl Roads Division Presentation	Roseville Park was supposed to have been resurfaced two years ago, but was held up due to no waters plans to lay new water mains. Is there a new date for doing this as NI Water has done nothing and has no plans to do anything soon?
5	Cllr Uel Mackin	Dfl Roads Division Presentation	Can you please outline the Quality Assurance procedures that are in place to ensure that work carried out by contractors and in-house teams is completed to the required standard?
6	Cllr Uel Mackin	Dfl Roads Division Presentation	<p>Please provide an update on action taken to deal with surface water flooding issues at:</p> <ul style="list-style-type: none"> • Pinehill Road, Drumbo • Rural Cottages, Front Road, Drumbo • Drennan Road, Lisburn • Comber Road, Hillsborough
7	Cllr Uel Mackin	Dfl Roads Division Presentation	An update please on Drainage improvement at Glen Road

	Member	Topic	Question
8	Cllr Uel Mackin	DfI Roads Division Presentation	An update please on resurfacing on Branial Road, Glen Road, and Mandeville Avenue.
9	Cllr Uel Mackin	DfI Roads Division Presentation	An update please on 40mph schemes at Old Ballynahinch Road and Mealough Road and speed calming measures at Church Road, Boardmills.
10	Cllr Uel Mackin	DfI Roads Division Presentation	An update on traffic flow measures for Cromwells Highway.
11	Cllr Sian Mulholland	DfI Roads Division Presentation	<p>Glenavy</p> <ul style="list-style-type: none"> • Can you give a timeframe for speed ramps to be installed at the entry points of the village? • The Cat Eyes and Road markings are worn and no longer clearly visible at night on the ghost islands at the A26 junctions at junctions to Lough Road, Scroggy Road and Glenavy village. Can this be upgraded and brought back to full use. • Surface water from the Crewe Park Road is continually flooding the A26, and creating a major problem on this road. What plans are there to resolve this? When will this happen? • The surface of the Glen Road past the Edenturchar junction is very poor. Given the high volume of traffic to the church, Ballymacrickett School, Glenavy GAA and Townland boxing club are there any plans to improve this stretch of road both in surface and in sight line improvement?
12	Cllr Sian Mulholland	DfI Roads Division Presentation	<p>Aghalee</p> <ul style="list-style-type: none"> • Can you provide a timeline for the installation of the speed ramps in the village?

	Member	Topic	Question
13	Cllr Sian Mulholland	DfI Roads Division Presentation	<p>Stoneyford</p> <ul style="list-style-type: none"> • There is an ongoing issue of cement at the top of the Stoneyford Road and the top of the Hunts Hill Road, are there any plans to improve this given the hazard it's causing for motorists? • There is a significant dip in the road on the way into the village at the entrance to the Reservoir, are there any plans to assess this and the quality of the road? • There is a significant need for traffic calming measures in the villages given the straight road through and a playpark on a different side of the road from major developments. Are there any plans to address this road safety issue?
14	Cllr Sian Mulholland	DfI Roads Division Presentation	<p>Maghaberry</p> <ul style="list-style-type: none"> • The junction of the Moira Road, Lisnabilla Road and Trummery Lane, accidents and near-accidents continue to happen at this junction. What are DfI plans to improve this junction.
15	Cllr Alan Givan	DfI Roads Division Presentation	Update on the construction of the new road planned for the Pond Park Road through to the Beanstown Road?
16	Cllr Alan Givan	DfI Roads Division Presentation	With the opening of the new Health Centre of the Hillsborough Road. What are the plans to manage all the additional traffic in and out of the hospital site?
17	Cllr Andrew Gowan	DfI Roads Division Presentation	To provide an update on when road signs will reflect the name Royal Hillsborough
18	Cllr Andrew Gowan	DfI Roads Division Presentation	To outline how they intend to work with LCCC to address road safety concerns in Annahilt, through the upcoming rural settlements scheme
19	Cllr Andrew Gowan	DfI Roads Division Presentation	To provide an update on road safety improvements planned for junctions at Ballykeel
20	Cllr Andrew Gowan	DfI Roads Division Presentation	For an update on assessment on reviewing the traffic speed limit on Glebe Road, Annahilt

	Member	Topic	Question
21	Cllr Andrew Gowan	DfI Roads Division Presentation	To provide an update on the change in speed limit at Cargyreevy
22	Cllr Uel Mackin	DfI Roads Division Presentation	Given the level of housing development in the area, can the Department please advise of any plans they have or could bring forward to improve traffic flow on the roads network leading to and at the M1 Junction 6 (Saintfield Road Roundabout)
23	Cllr Uel Mackin	DfI Roads Division Presentation	Can the Department please provide an update on the outcome of and progress being made in relation to the "on pavement parking" consultation.
24	The Rt Worshipful the Mayor, Cllr Scott Carson	DfI Roads Division Presentation	For the junction upgrades in line with LD1 and the wider planning approval for additional homes in Ballymacash, what is the timescale for completion, and the consultation that has taken place around this.
25	The Rt Worshipful the Mayor, Cllr Scott Carson	DfI Roads Division Presentation	How many personal injury claims have been made to DfI Roads in the Lisburn Castlereagh area in the last 3 years, and what is the total amount been paid out?
26	The Rt Worshipful the Mayor, Cllr Scott Carson	DfI Roads Division Presentation	How many vehicle damage claims have been made to DfI Roads in the Lisburn Castlereagh area in the last 3 years, and what is the total amount been paid out?
27	The Rt Worshipful the Mayor, Cllr Scott Carson	DfI Roads Division Presentation	Can you outline the history of engagement and meetings held at departmental level with elected and community representatives in respect of i) improvement works at McDonalds roundabout on McKinstry Road and also ii) improvements to the Junction of McKinstry Road and The Cutts.
28	The Rt Worshipful the Mayor, Cllr Scott Carson	DfI Roads Division Presentation	What action is the department taking to prevent flooding occurring on i) Old Road, Maghaberry where the full width of the road is often submerged after rainfall, ii) Moneybroom Road, Lisburn as a dip in the road causes the full width to be submerged and iii) under the bridge in Grand Street, Hilden, as this continuously floods.
29	The Rt Worshipful the Mayor, Cllr Scott Carson	DfI Roads Division Presentation	In respect of the ongoing work at Knockmore Road, Prince William Road junction, when is this planned to be completed and what consideration has been given to local residents who are woken early in the morning at the various weekend closures that have taken place?
30	Cllr Hon Nicholas Trimble	DFI Roads Division Presentation	Question regarding the signal sequence at the main crossroads of Laganbank Road / Governor's Road Lisburn. Ongoing issues with traffic flow particularly at peak traffic times - traffic heading towards Sprucefield from Lisburn is significantly delayed in getting through the junction after passing their green light. This is significantly impacting the pedestrian crossing between Halfords and Central Primary School. What is happening is that at peak times pedestrians seeking to cross are given a green man but are prevented from crossing due to the buildup of cars still slowly

			<p>passing through the junction - at times they are missing the green man altogether. Pedestrians in question are often parents with children coming to and from the school. Could Dfl roads look at re sequencing the lights to allow a great window for pedestrians to cross at this section? Even if only sequenced to come on at particular times of day would be sufficient.</p> <p>For further context, I know that the school has made representations to this effect because it is affecting many parents getting their children safely across this junction.</p>
--	--	--	---



Department for

Infrastructure

An Roinn

Bonneagairwww.infrastructure-ni.gov.uk

56

**DFI Roads
Eastern Division**

Mr David Burns
Chief Executive
Lisburn & Castlereagh City Council

Annexe 7
Castle Buildings
Stormont Estate
Upper Newtownards Road
BELFAST
BT4 3SQ
Telephone: 0300 200 7899
Email: Eastern.Secretariat@infrastructure-ni.gov.uk

Your reference:

Our reference:

Date: 25 November 2022

Dear David

QUESTIONS ASKED BY ALDERMEN AND COUNCILLORS, IN ADVANCE OF THE PRESENTATION OF THE EASTERN DIVISION AUTUMN 2022 REPORT

In advance of the Eastern Division Autumn Report to Council members have submitted a number of matters for consideration.

My responses to the matters raised by members are as follows:-

Councillor Jonathan Craig

When Milltown Avenue, Derriaghy was resurfaced last year we were told that the resurfacing of Milltown Avenue, Milltown Gardens and Milltown Park were to be carried out this financial year. Can you please indicate when this will be done?

Milltown Avenue, Milltown Gardens and Milltown Park are included in the Department's draft three year resurfacing plan to be promoted for progression from 2023 onwards subject to funding, other competing priority schemes and statutory consultations.

DfI Roads will continue to monitor these areas through our cyclic inspections in accordance with the Department's maintenance inspection regime.

Councillor Jonathan Craig

Laurel Way in Seymour Hill is in a particularly bad condition needing constant repairs as you turn into the shops, is there any planned dates to resurface this?

Laurel Way, Seymour Hill has been included in the Department's draft three year resurfacing plan to be promoted for progression from 2023 onwards subject to funding, other competing priority schemes and statutory consultations.

DfI Roads will continue to monitor this area through our cyclic inspections in accordance with the Department's maintenance inspection regime.

Councillor Jonathan Craig

Both Cyprus Close and Hollymount in Seymourhill have been dug up by amenity companies so many times that the main road surface no longer exists but now consists of numerous joined up repairs. Is there any plans to resurface these areas? And if so when?

It should be noted that public utility companies have a statutory entitlement to install and maintain their apparatus within the public road boundary. Reinstatement of utility openings is carried out in accordance with the NIRAUC (Northern Ireland Road Authority and Utility Committees) Code of Practice – Specification for the Reinstatement of Openings in Roads.

The Department is aware of the general condition of Hollymount and Cyprus Close. Both streets are currently included in the Departments draft three year resurfacing plan to be promoted for progression from 2023 onwards subject to funding, other competing priority schemes and statutory consultations. A date for implementation cannot be confirmed at this time. In the meantime, DfI Roads will continue to monitor this area through our cyclic inspections in accordance with the Department's maintenance inspection regime.

Councillor Jonathan Craig

Roseville Park was supposed to have been resurfaced two years ago, but was held up due to NIWater plans to lay new water mains. Is there a new date for doing this as NIWater has done nothing and has no plans to do anything soon?

DfI Roads had previously programmed resurfacing in the Roseville Park area during 2021. Unfortunately this was postponed due to an NI Water lead pipe replacement scheme. DfI Roads have received no further information regarding NI Water's programme for these works at this time. DfI Roads will continue to liaise NI Water on this matter before considering taking forward a resurfacing scheme.

Councillor Uel Mackin

Please provide an update on action taken to deal with surface water flooding issues at:

- **Pinehill Road, Drumbo**
DfI Roads have recently completed remedial drainage works at this location. These works were completed during the week commencing 14 November 2022.
- **Rural Cottages, Front Road, Drumbo**
DfI Roads have completed a drainage investigation at this location and remedial drainage works have been identified. DfI Roads have programmed for these drainage works to be completed during December 2022.
- **Drennan Road, Lisburn**
DfI Roads have recently completed remedial drainage works at this location. These works were completed during the week commencing 14 November 2022.
- **Comber Road, Hillsborough**
DfI Roads have recently completed remedial drainage works at this location. These works were completed during the week commencing 14 November 2022.

Councillor Uel Mackin

An update please on Drainage improvement at Glen Road – DfI Roads identified remedial drainage works at this location and these works commenced on 21 November 2022.

Councillor Uel Mackin**An update please on resurfacing on Braniel Road, Glen Road, and Mandeville Avenue.**

Braniel Road and Glen Road form part of the DfI Roads 2023/24 Surface Dressing Programme. In preparation for implementation of this scheme, it will be necessary to undertake pre-surface dressing patching works which are currently programmed. Mandeville Avenue previously formed part of the Department's Micro Surfacing programme during 21/22 however this had to be postponed due to programmed utility works. DfI Roads has therefore included Mandeville Avenue on a supplementary programme for resurfacing to be promoted for progression from 2023 onwards subject to funding, other competing priority schemes and statutory consultations.

Councillor Uel Mackin**An update please on 40mph schemes at Old Ballynahinch Road and Mealough Road and speed calming measures at Church Road, Boardmills.**

I can advise that this speed limit is currently being progressed through the legislative process by our Traffic Legislation Branch and the Notice of Intention for this change in speed limit was advertised on 7th September.

Unfortunately, at present I cannot give a timescale when the Legislation will be completed.

In relation to the change in speed limit at Mealough Road, I can advise that the legislative process is complete and the signage will be erected in the next 6-8 weeks.

When assessing any road for the provision of traffic calming measures consideration has to be given to many factors i.e. the type of road; the surrounding environment; existing road alignment; type of features available; likely approach speed to first feature; the aesthetics; the likely support for any proposed measures; impact on surrounding road network and the objective of the proposals.

Road humps are normally considered for residential streets, within a 30mph speed limit area, where the main objective is to reduce average vehicle speeds to approximately 20mph. Such measures are not appropriate for a rural traffic route such as Church Road, Boardmills.

Councillor Uel Mackin**An update on traffic flow measures for Cromwells Highway.**

I can advise that we currently consider the introduction of a one way in Cromwells Highway has little overall benefit and would not have the support of all residents. As such we have no current plans to change the road layout at this time.

Councillor Sian Mulholland**Glenavy**

Can you give a timeframe for speed ramps to be installed at the entry points of the village?

The Department has carried out the consultation for the introduction of traffic calming measures on Belfast Road and Gobrana Road. With a representation still valid for the proposed works, it has required a submission to be provided to our Transport and Legislation Branch to decide the way forward. As such I am unable to provide a timeframe when the legislative process will be completed.

The Cat Eyes and Road markings are worn and no longer clearly visible at night on the ghost islands at the A26 junctions at junctions to Lough Road, Scroggy Road and Glenavy village. Can this be upgraded and brought back to full use.

The Department recently completed a refresh all road markings, road studs and cats eyes on the A26 Glenavy/Moira Road from Moira Roundabout to our boundary at Gobrana Road. The locations detailed above formed part of this programme of work.

Surface water from the Crewe Park Road is continually flooding the A26, and creating a major problem on this road. What plans are there to resolve this? When will this happen?

DfI Roads recently completed a further drainage investigation at this location. Remedial drainage works were identified as part of this investigation and these works have now been programmed. Subject to contractor availability, it is anticipated that this work will be completed in December 2022.

The surface of the Glen Road past the Edenturcher junction is very poor. Given the high volume of traffic to the church, Ballymacrickett School, Glenavy GAA and Townland boxing club are there any plans to improve this stretch of road both in surface and in sight line improvement?

DfI Roads have not received any previous requests for the resurfacing of Glen Road, Glenavy. In response to this request, we will arrange for this area to be assessed to identify the need for resurfacing against other competing priorities.

The Department has recently considered a range of options to improve access for pedestrians along the Glen Road between Ballymacrickett Primary School and Glenavy Village. These options included realigning the Glen Road and improving forward sightlines. While the Department is always keen to improve road safety and facilities for pedestrians, the required works and high cost of such a scheme would have a relatively low priority rating when compared with other potential minor works schemes and therefore the Department has no current plans to undertake road improvements along Glen Road.

The Department has recently changed the existing speed limit on Glen Road, introducing a 40 mph speed from Glenavy towards Chapel Road and a 30 mph limit on Chapel Road, Glen Road and Scroggy Road around Ballymacrickett Primary School. This reduction in speed limits will help to reduce vehicle speed on these roads. The Department has also programmed the provision of additional traffic islands on Glen Road this financial year.

Councillor Sian Mulholland

Aghalee

Can you provide a timeline for the installation of the speed ramps in the village?

The Department has received the scheme proposals from Lisburn and Castlereagh City Council appointed consultants and is preparing for the press advertisement, as part of the consultation

process for January 2023. The timing of this proposal is subject to the satisfactory completion of the legislative process.

Stoneyford

There is an ongoing issue of cement at the top of the Stoneyford Road and the top of the Hunts Hill Road, are there any plans to improve this given the hazard it's causing for motorists?

DfI Roads have recently written to a local business owner to remind them of their responsibilities on this matter. They have been requested to undertake the necessary action deemed appropriate to remove the deposited material from road and verge and arrange for the road to be regularly swept clean of any building detritus.

There is a significant dip in the road on the way into the village at the entrance to the Reservoir, are there any plans to assess this and the quality of the road?

DfI Roads is not aware of this issue and it has not been recorded through our routine cyclic safety inspections. In response to this enquiry, we will arrange a further investigation of the locality, assess the road condition and identify if any remedial action is deemed necessary.

There is a significant need for traffic calming measures in the villages given the straight road through and a playpark on a different side of the road from major developments. Are there any plans to address this road safety issue?

The Department recognises the importance of traffic calming and road safety measures and is committed to exploring solutions that deliver better for communities and improve lives across Northern Ireland. The Department receives many requests for traffic calming and very much would like to be in a position to fulfil all valid requests. However, particularly in the context of severe and challenging budget cuts, those areas requiring most urgent attention must be prioritised. For consistency and fairness the current criteria through which this is assessed includes factors such as speed and volume of traffic, the most up to date three years personal injury collision statistics and environmental factors such as the proximity of public buildings and the nature of the road which is a local distributor road.

The assessment indicates that Stoneyford Road is currently placed 70th on the list of sites that have been assessed for traffic calming measures within the Eastern Division area.

Given the number of other areas competing for inclusion within the Traffic Calming Programme that are deemed to be a greater priority, I do not envisage being able to provide traffic calming measures at Stoneyford Road for the foreseeable future.

The prioritisation of work within any particular area is never easy, but I can assure you that the Department does attempt to do this in a fair and equitable manner, concentrating its limited finances to those areas where the need is greatest.

Councillor Sian Mulholland

Maghaberry

The junction of the Moira Road, Lisnabilla Road and Trummery Lane, accidents and near-accidents continue to happen at this junction. What are DFI plans to improve this junction.

I can advise that our Network Development Section previously undertook a feasibility study to consider a number of options to improve the A3 Lisburn Road / Trummery Lane / Lisnabilla Road junctions at Trummery Crossroads. This study showed that a scheme to widen the A3 Lisburn Road to provide right turn pockets on the A3 Lisburn Road and realign Trummery Lane to form a T junction at Lisnabilla Road would require extensive acquisition of third party land, culverting of an existing watercourse, alteration to existing services, provision of street lighting and accommodation works. Such a scheme at this location would therefore involve large scale works at a high cost.

A Minor Works Improvement scheme to improve this junction does not rank as highly as other potential schemes and it would therefore find it difficult to compete for our limited funding. Under these circumstances, the Department has no plans to bring forward a Minor Works Scheme to improve the junction of the A3 Lisburn Road / Trummery Lane / Lisnabilla Road at Trummery Crossroads, Moira at this time.

However I can advise that we have recently had the road markings refreshed on both sides of the junction and SLOW road markings placed at the existing crossroads warning signs on the A3 Lisburn Road on both approaches to the junction.

Councillor Alan Givan

Update on the construction of the new road planned for the Pond Park Road through to the Beanstown Road?

I can advise that Phase 3a of the North Lisburn Feeder Road from Lady Wallace Avenue to Old Park Road is at the beginning of the land acquisition stage.

The Notice of Intention to Make a Vesting Order will be published in the near future and it is hoped to arrange site visits to agree accommodation works in the coming weeks. Once the land has been acquired, and this process could take up to one year to complete, the construction phase will begin and this is programmed for 6-8 months.

Councillor Alan Givan

With the opening of the new Health Centre of the Hillsborough Road. What are the plans to manage all the additional traffic in and out of the hospital site?

I can advise that proposals for the new health centre at this location were assessed and warranted no new traffic management considerations.

Councillor Andrew Gowan

To provide an update on when road signs will reflect the name Royal Hillsborough.

I can advise that a survey has shown there are over 100 direction signs of various sizes that currently include Hillsborough and, as such, would need to be changed to Royal Hillsborough. Some of these, especially along the A1 dual carriageway are of significant size and therefore replacement would involve considerable costs and resources.

Given the costs we are considering overlaying the existing text on the larger signs and replacing other signs as they reach the end of their serviceable lives.

Councillor Andrew Gowan

To outline how they intend to work with LCCC to address road safety concerns in Annahilt, through the upcoming rural settlements scheme.

I can advise that we are aware of a council led Environmental Improvements scheme proposed for Annahilt and we will assess any proposals as and when they are received.

Councillor Andrew Gowan

To provide an update on road safety improvements planned for junctions at Ballykeel.

I can advise that a package of road marking and signage improvements are proposed for this location this financial year.

Councillor Andrew Gowan

For an update on assessment on reviewing the traffic speed limit on Glebe Road, Annahilt.

You will appreciate the resources to carry out surveys is limited and sometimes it may take a number of months before we can complete these given the volume of requests we receive.

This work remains on our programme of and will be carried out when resources permit

Councillor Andrew Gowan

To provide an update on the change in speed limit at Cargycreevy.

I can advise that this speed limit is currently being progressed through the legislative process by our Traffic Legislation Branch and the Notice of Intention for this change in speed limit was advertised on 7th September.

Unfortunately, at present I cannot give a timescale when the Legislation will be completed.

Councillor Uel Mackin

Given the level of housing development in the area, can the Department please advise of any plans they have or could bring forward to improve traffic flow on the roads network leading to and at the M1 Junction 6 (Saintfield Road Roundabout).

As you are aware the A49 Saintfield Road and Plantation Road has been the subject of traffic congestion for a number of years.

More recently, I can advise that we had received complaints regarding queuing onto M1, Belfast bound, from the off slip and this raised safety concerns.

As a result, staff from our Traffic Information and Control Centre have amended the timings at all the small intersections on the roundabout, green times, offsets, start times etc to ensure there is no, or limited, exit blocking.

The roundabout operates up to 5 sets of timings for different times of the day. A short cycle time was employed during the AM peak period that has now been increased to provide additional time to the predominant movements.

I can advise that staff from our Traffic Information and Control Centre will continue to monitor the timings and may make further changes as necessary, however we believe on balance the existing layout of the Saintfield Road Roundabout is the best that can be achieved at this time.

Councillor Uel Mackin

Can the Department please provide an update on the outcome of and progress being made in relation to the “on pavement parking” consultation.

The Department recently sought views on how to deal with pavement parking with the consultation period finishing on 18 March 2022. In response the Department received 1,209 replies to the online questionnaire and 28 written replies, the responses are currently being analysed.

Seeking the public views on options to deal with pavement parking follows and complements the Department's “Think Before You Park” road safety campaign which launched on 2nd November 2021 and which is aimed at highlighting and addressing the dangers associated with pavement parking. The campaign was publicised on radio, bus rear advertising and on social media, and carries the hashtag #ThinkBeforeYouPark.

Rt Hon The Mayor Councillor Scott Carson

How many personal injury claims have been made to DfI Roads in the Lisburn Castlereagh area in the last 3 years, and what is the total amount been paid out? Claims

The Department maintains information on public liability claims on a Claims Management System by Roads Section Office area, which broadly align with Council areas. Claims data recorded on the Claim Management System is ‘live’ data which may be subject to change during a claim's lifecycle.

The figures I will provide today were extracted from the Claims Management System on 17 November 2022.

It should be noted that claims received in a financial year are not always concluded in the same financial year. Therefore, the financial figures will include compensation, legal and other costs paid for claims received in prior financial years.

141 roads related claims for personal injury were received by the Department for the Lisburn and Castlereagh Section area during the three year period from 2019/2020 to 2021/2022. During the same period £932,000 was spent on personal injury claims for the Lisburn and Castlereagh Section area, this included £512,798.48 on compensation.

Rt Hon The Mayor Councillor Scott Carson

How many vehicle damage claims have been made to DfI Roads in the Lisburn Castlereagh area in the last 3 years, and what is the total amount been paid out? Claims

The Department maintains information on public liability claims on a Claims Management System by Roads Section Office area, which broadly align with Council areas. Claims data recorded on the Claim Management System is 'live' data which may be subject to change during a claim's lifecycle.

The figures I will provide today were extracted from the Claims Management System on 17 November 2022.

It should be noted that claims received in a financial year are not always concluded in the same financial year. Therefore, the financial figures will include compensation, legal and other costs paid for claims received in prior financial years.

862 roads related claims for vehicle damage were received by the Department for the Lisburn and Castlereagh Section area during the three year period from 2019/2020 to 2021/2022. During the same period £154,000 was spent on vehicle damage claims for the Lisburn and Castlereagh Section area, this included £143,222.01 on compensation.

Rt Hon The Mayor Councillor Scott Carson

Can you outline the history of engagement and meetings held at departmental level with elected and community representatives in respect of i) improvement works at McDonalds roundabout on McKinsty Road and also ii) improvements to the Junction of McKinsty Road and The Cutts. Traffic

I can advise that the Department does not hold this information in a format that can list the meetings that have previously taken place on these schemes. If the Councillor has a specific meeting in mind we can investigate further.

Rt Hon The Mayor Councillor Scott Carson

What action is the department taking to prevent flooding occurring on i) Old Road, Maghaberry where the full width of the road is often submerged after rainfall, ii) Moneybroom Road, Lisburn as a dip in the road causes the full width to be submerged and iii) under the bridge in Grand Street, Hilden, as this continuously floods. Maintenance. NMS

The flooding on the Old Road Maghaberry can be attributed to blocked open land drains which are the ownership of a local land owner. DfI Roads have written to this landowner and requested for the land drains to be cleared.

DfI Roads are aware of a flooding issue on Grand Street, Hilden at the location detailed. Grand Street, Hilden has been included in DfI Roads Lisburn & Castlereagh Section programme of structural drainage works to be completed during the 22/23 financial year.

Rt Hon The Mayor Councillor Scott Carson

In respect of the ongoing work at Knockmore Road, Prince William Road junction, when is this planned to be completed and what consideration has been given to local residents

who are woken early in the morning at the various weekend closures that have taken place? Traffic

I can advise that the works should be completed in January 2023. There have been a number of weekend closures to complete both the surfacing element of the works and the construction of traffic islands. We are not aware of any complaints having been received and works are usually carried out during the day. The Sunday closure 27 November 2022 will hopefully finish the surfacing works. Remaining work will be completed by lane closures.

Councillor Nicholas Trimble

Signal sequence at the main crossroads of Laganbank Road / Governor's Road Lisburn.

Ongoing issues with traffic flow particularly at peak traffic times:-

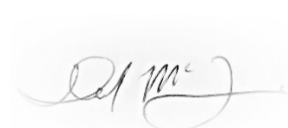
- **Traffic heading towards Sprucefield from Lisburn is significantly delayed in getting through the junction after passing their green light.**
- **This is significantly impacting the pedestrian crossing between Halfords and Central Primary School. At peak times pedestrians seeking to cross are given a green man but are prevented from crossing due to the build-up of cars still slowly passing through the junction At times they are missing the green man altogether.**
- **Pedestrians in question are often parents with children coming to and from the school. The school has made representations to this effect because it is affecting many parents getting their children safely across this junction.**

Could Dfl roads look at resequencing the lights to allow a great window for pedestrians to cross at this section? Even if only sequenced to come on at particular times of day would be sufficient.

The problems observed at this junction mainly result from the reduction in traffic lanes (2 to 1) beyond the junction. Dfl is aware of the problems and are looking at the options to reduce the occurrences and the resulting risk to pedestrians.

Once we have concluded these considerations, I will write to the Council to update them on the proposed actions.

I hope this information is helpful.



DES MCFARLANE
Divisional Roads Manager